



SWING Hydraulic motor driven Worm gear speed reduction Continuous  
 360° full circle swing on ball bearing slew ring  
 Automatic swing lock  
 Swing speed ----- 2.5 min<sup>-1</sup>{rpm}

OUTRIGGERS Manually extended sliders and hydraulically extended jacks  
 Integral with crane frame Power up and down  
 Extended width ----- Min. 1,535 mm  
 Mid. 2,100 mm  
 Max. 2,600 mm

HYDRAULICS Hydraulic pump ----- Single gear pump  
 Hydraulic motors ----- Axial piston type for winch  
 Axial piston type for swing  
 Control valves ----- Multiple control valves with integral  
 safety valve

SAFETY DEVICES Load meter  
 Load indicator  
 Over-winding alarm  
 Hoisting limiter [TM-ZR232(H) only]  
 P.T.O indicator lamp  
 Hook safety latch  
 Hydraulic safety valves, check valves and holding valves  
 Level gauge

CRANE MASS Approx. 775 kg (includes standardized mounting parts)

NOTE : Operating speeds of the crane are guaranteed under the  
 condition that the pump delivery is 45 L /min.

## RATED LIFTING CAPACITIES IN KILOGRAMS

B \ A	2.51 m
	4.4 m
1.7 m and below	2,330
2.0 m	2,030
2.5 m	1,530
3.0 m	1,280
3.5 m	1,080
4.0 m	980
4.2 m	930

A : Boom length

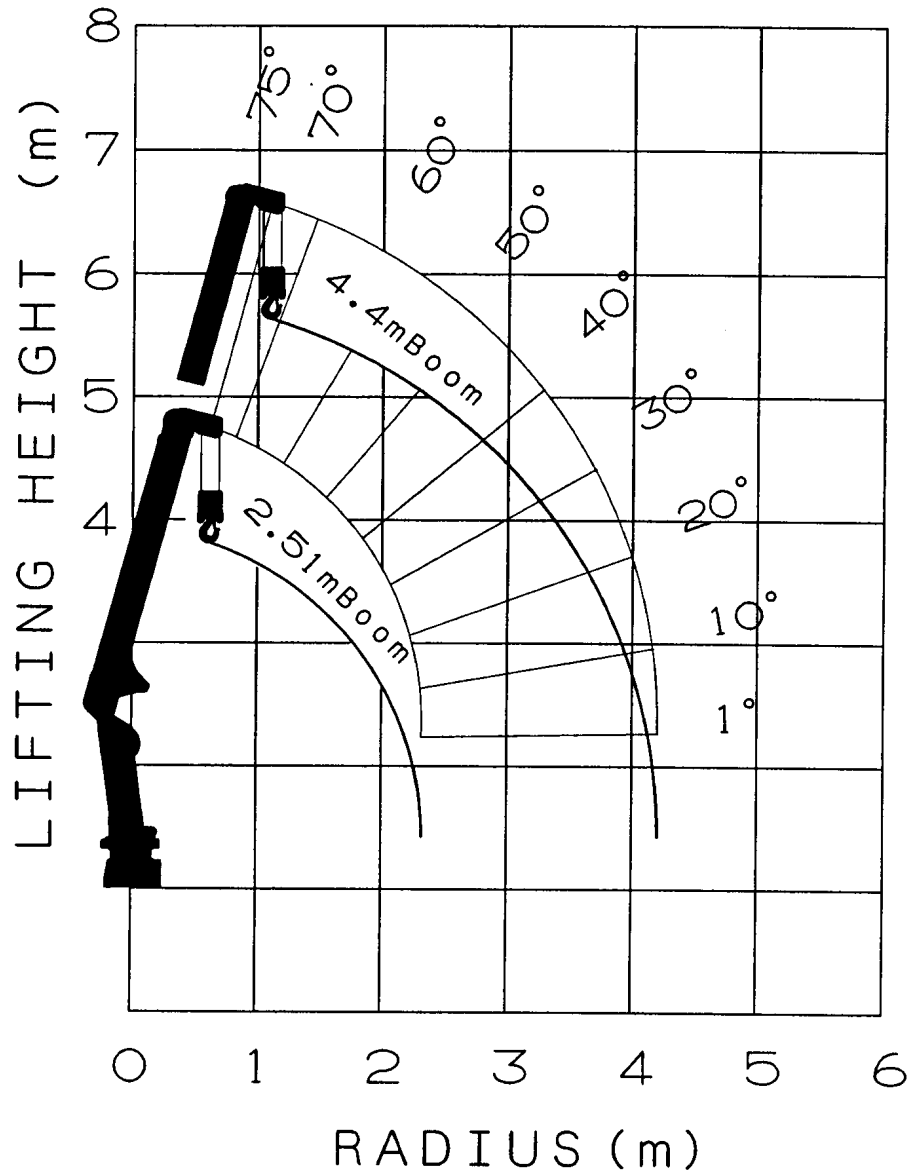
B : Load radius

## NOTES :

1. The mass of the hook (30 kg), slings and all similarly used load handling devices must be added to the mass of the load.
2. The above numerical values of rated lifting capacities are based on crane strength only.

The rated lifting capacities based on stability may lower than those in the above table depending on the loading conditions and the types of the chassis.

WORKING RANGE

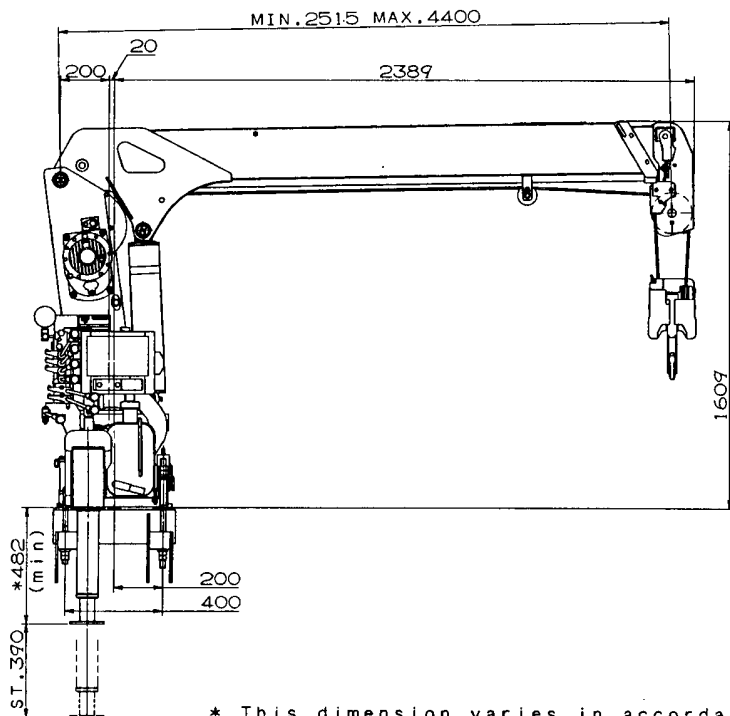


NOTE:

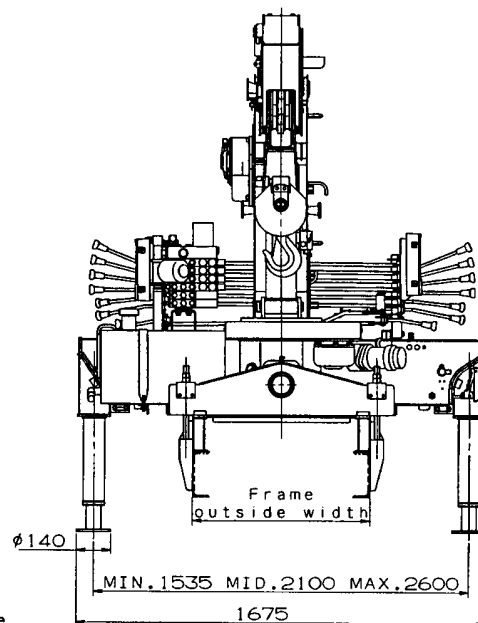
The above lifting heights and boom angles are based on a straight (unladen) boom, and allowance should be made for boom deflection obtained under laden conditions.

### DIMENSIONS

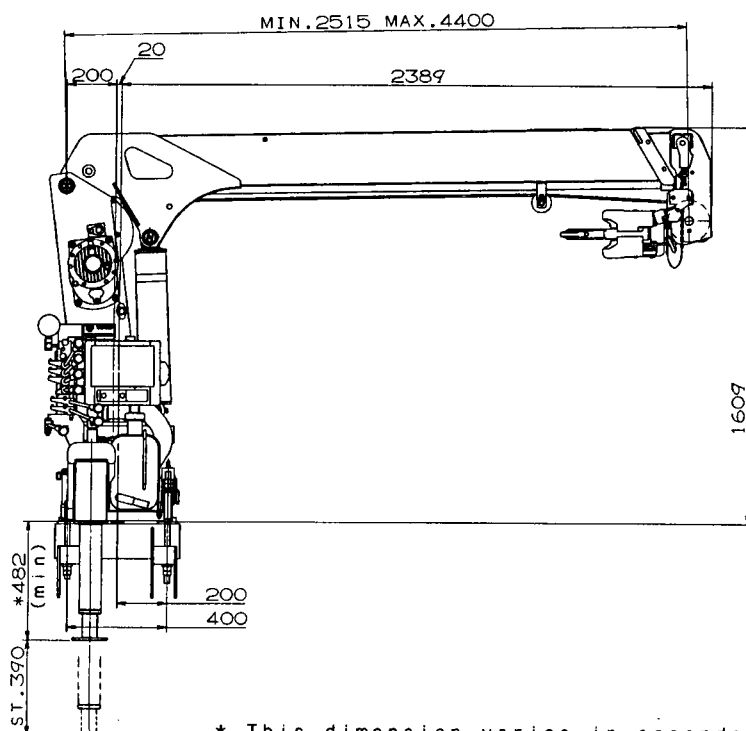
#### ZR232



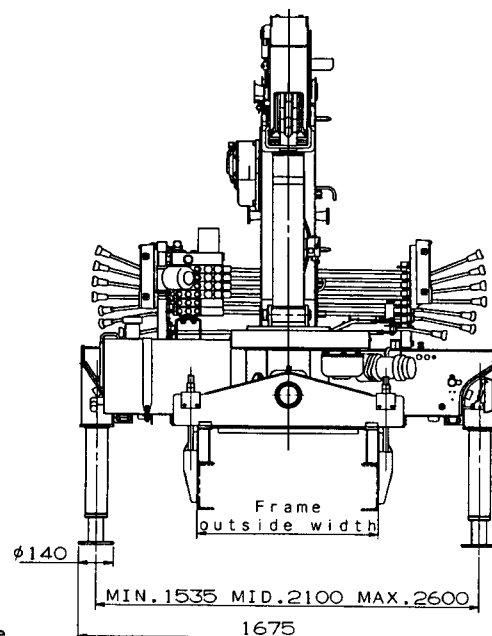
\* This dimension varies in accordance with jack floats applied.



#### ZR232(H)



\* This dimension varies in accordance with jack floats applied.



## GENERAL DATA FOR SUITABLE TRUCKS

Gross vehicle mass (including crane mass) -----  
4,000 to 6,000 kg

P.T.O. torque ----- 98 N·m{10 kgf·m} min.

P.T.O. revolution ----- Approx. 300 to 2,500 min<sup>-1</sup>{rpm}

Width for crane mounting ---- Approx. 620 mm min.

Frame ----- Weight distribution and frame strength  
should be calculated for each truck

Frame width range (inside to outside) -----  
Approx. 650 to 820 mm

Frame height (ground to frame top) -----  
Approx. 905 mm max.  
(Height of crane mounting base can be  
changed by combination of jack floats  
and crane bases)