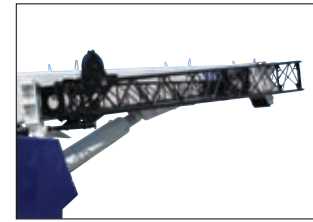


TADANO MANTIS cranes are engineered like no other. Massive steel fabrications and powerful diesel engines matched to state of the art hydraulics and controls make this crane ideal for both lift applications as well as rugged duty-cycle work.

NO OTHER CRANE COMBINES SO MANY VALUABLE FEATURES:

- Pick-and-carry the full crane load chart through 360°.
- Lift and walk...even with tracks retracted.
- Climb steeper grades, thanks to minimized counterweight and low center of gravity.
- Pull through deep mud without bogging down.
- Telescope or lift the boom with a full load on the hook.
- Low clearance height, retract on-the-fly tracks and telescopic boom open new utilization possibilities that cannot be realized with conventional cranes.
- Independent, 2-speed hydrostatic track drives allow pivot turns and counter rotation
- Hydraulic tool circuit option powers wide choice of Mantis-approved tools.
- Easy transport and fast setup saves time and money on the job.

OPTIONAL EQUIPMENT



BOOM EXTENSION AND JIB

Lattice type, swing-away stores along base boom section. Boom extension can be used with or without jib. Jib can only be used with boom extension deployed. Jib can be offsettable at 15° and 30°.



ACCESS WALKWAYS

Access walkways are available for all Mantis crane models and attach to either the carbody or rotating upper structure. The walkways allow for easier egress and ingress to the operator's cab as well as to the machinery when the upper rotating frame is not aligned front to rear.



AUGER AND POLE CLAW

Auger options include a complete auger kit or an auger ready package that includes all controls, piping and stowage bracket. A variety of auger bits and extension bars can be utilized for various drilling conditions and depths.

The NEW heavy-duty boom mounted pole claw increases the flexibility of the Mantis crane on the power line job. With the ability to dig holes, pick and carry transmission poles, and set and plumb poles, the Mantis crane can be a stand alone machine for powerline work.



LIGHT BAR AND TOOL CIRCUIT

External mount light bars connected to the Load Moment Indicator system allow for external indication of the load. When regulations require this option, Tadano Mantis is ready to meet the requirements with single or double light bar options.

The auxiliary tool circuit provides hydraulic power for open center hydraulic work tools and comes standard with quick disconnect fittings and 15.24m of hydraulic hose mounted on a hose reel.

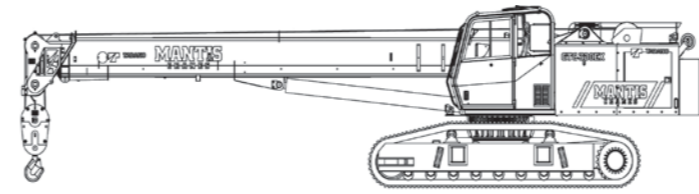
TADANO MANTIS CORPORATION

1705 Columbia Avenue • Franklin, TN 37064 USA • Toll-Free: 1-800-272-3325 • Fax: 615-790-6803 • mantiscranes.com

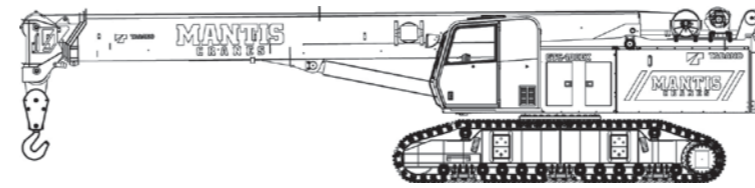
TADANO Ltd., International Division
 4-12, Kamezawa 2-chome,
 Sumida-Ku, Tokyo 130-0014, Japan
 Tel: +81 3 3621 7750
 Fax: +81 3 3621 7785
 E-mail: tdnihq@tadano.co.jp
www.tadano.co.jp/indexe.html



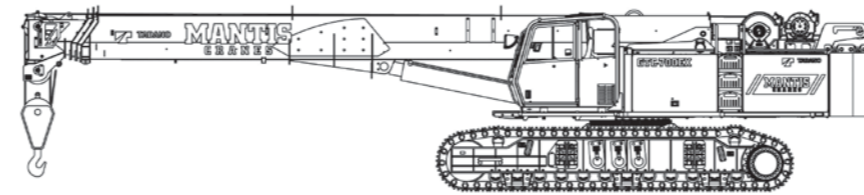
GTC-300EX 27t Telescopic Boom Crawler Crane



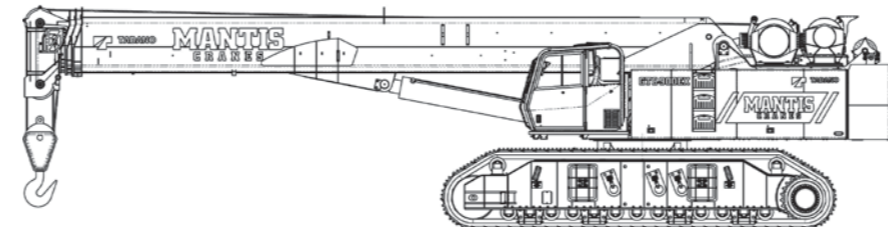
GTC-400EX 40t Telescopic Boom Crawler Crane



GTC-700EX 70t Telescopic Boom Crawler Crane

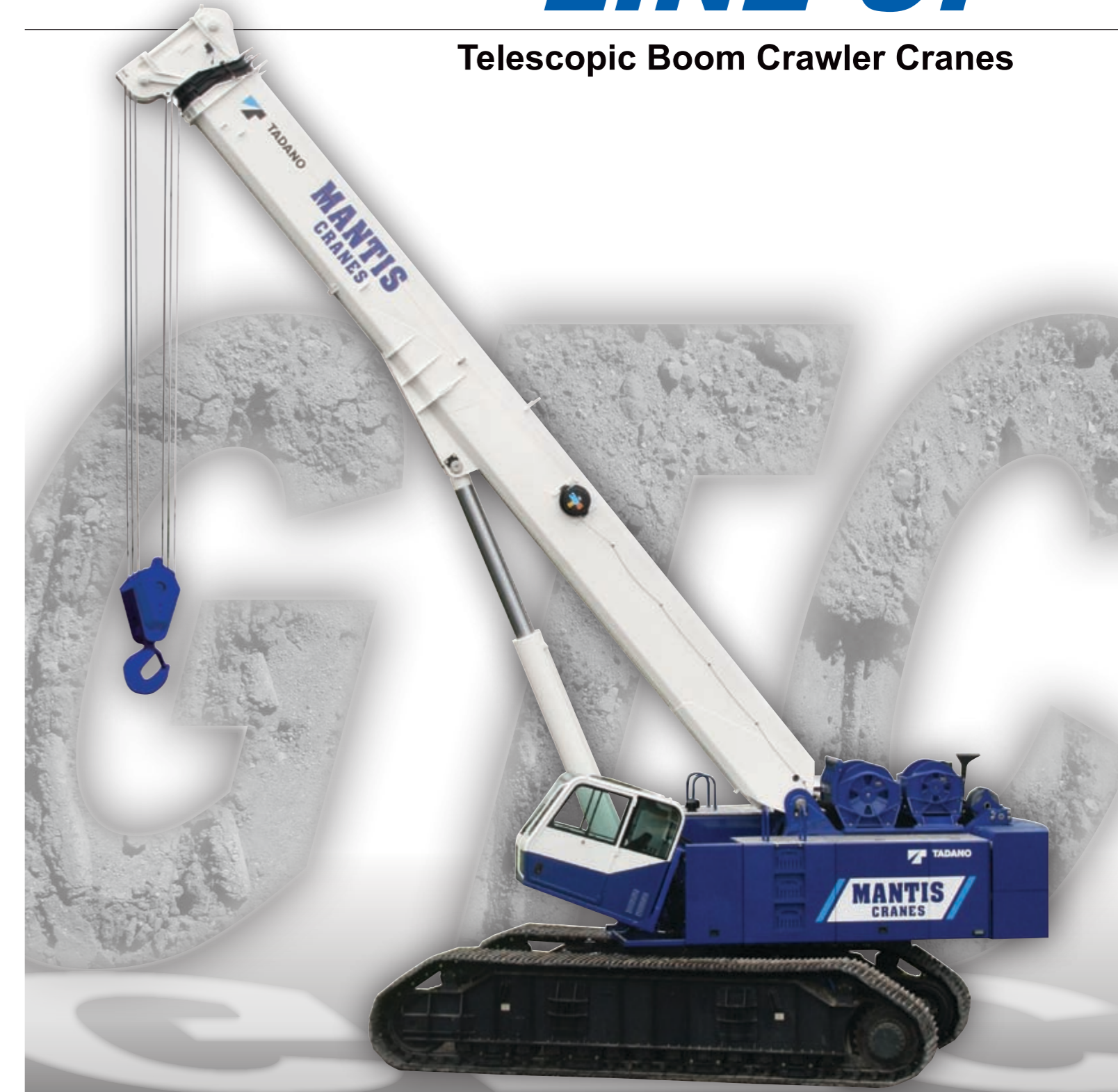


GTC-1000EX 100t Telescopic Boom Crawler Crane



LINE UP

Telescopic Boom Crawler Cranes



TADANO

**MANTIS
CRANES**

GTC-1000EX

100t Telescopic Boom Crawler Crane

Max. Lifting Capacity:	100t @ 2.5m
Main Boom Length:	12.8m - 39.0m
Extension and Jib:	10.7m + 7.6m
Max. Hook Height with Jib:	58.4m
Engine:	261kW
Track Width:	900mm
Dimensions:	16.46m X 3.99m (LxH)
Overall Width:	3.94m / 6.43m (Tracks Retracted / Extended)
Working Weight:	91,762 kg
Ground Pressure:	0.80 kg/cm ²
Gradeability:	60%
Travel Speed:	0.9 km/h - 2.5 km/h



GTC-400EX

40t Telescopic Boom Crawler Crane

Max. Lifting Capacity:	40t @ 3.0m
Main Boom Length:	10.4m - 32.0m
Extension and Jib:	9.1m + 6.1m
Max. Hook Height with Jib:	46.9m
Engine:	179kW
Track Width:	900mm
Dimensions:	13.29m X 3.05m (LxH)
Overall Width:	3.66m / 5.59m (Tracks Retracted / Extended)
Working Weight:	42,590 kg
Ground Pressure:	0.47 kg/cm ²
Gradeability:	68%
Travel Speed:	1.5 km/h - 2.5 km/h



GTC-700EX

70t Telescopic Boom Crawler Crane

Max. Lifting Capacity:	70t @ 3.0m
Main Boom Length:	11.4m - 34.0m
Extension and Jib:	9.1m + 6.1m
Max. Hook Height with Jib:	49.4m
Engine:	194kW
Track Width:	900mm
Dimensions:	14.90m X 3.22m (LxH)
Overall Width:	3.81m / 5.69m (Tracks Retracted / Extended)
Working Weight:	61,542 kg
Ground Pressure:	0.65 kg/cm ²
Gradeability:	68%
Travel Speed:	1.0 km/h - 2.8 km/h



GTC-300EX

27t Telescopic Boom Crawler Crane

Max. Lifting Capacity:	27t @ 3.0m
Main Boom Length:	10.0m - 24.4m
Extension and Jib:	6.1m + 6.1m
Max. Hook Height with Jib:	36.3m
Engine:	129kW
Track Width:	760mm
Dimensions:	12.52m X 2.90m (LxH)
Overall Width:	3.10m / 4.42m (Tracks Retracted / Extended)
Working Weight:	28,495 kg
Ground Pressure:	0.46 kg/cm ²
Gradeability:	56%
Travel Speed:	2.6 km/h - 4.0 km/h



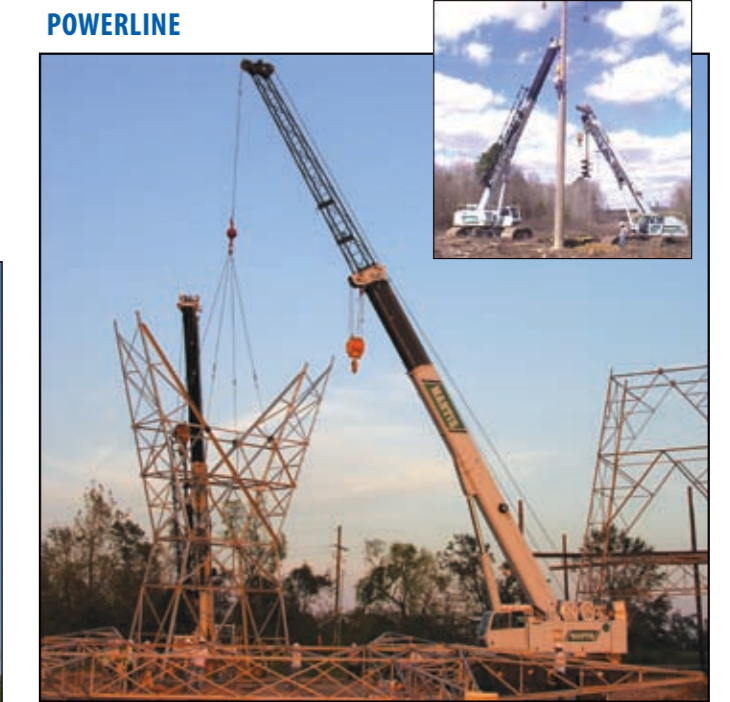
FOUNDATION



TANK BUILDING



POWERLINE



CONSTRUCTION



PICK AND CARRY



EXTREME CONDITIONS

