

TADANO CARGO CRANE

MODEL : TM-ZR503G

CRANE SPECIFICATIONS

<u>CRANE CAPACITY</u>	4,040 kg at 2.95 m (5-part lines)
<u>BOOM</u>	3-sectioned, fully hydraulic telescoping boom of pentagonal box construction
	Retracted length ----- 3.47 m
	Extended length ----- 8.31 m
	Extending speed ----- 4.84 m / 18 s
	Elevation ----- Elevated by a double-acting hydraulic cylinder
	Elevating speed ----- 1° to 78° / 12 s
	Boom point ----- 3 sheaves
<u>WINCH</u>	Hydraulic motor driven Spur gear speed reduction, provided with mechanical brake
	Single line pull ----- 7.92 kN{808 kgf}
	Single line speed ----- 76 m/min. (at 4th layer)
	Wire rope
	diameter × length -----
	8 mm × 67 m
	breaking strength ----- 43.1 kN{4.39 tf}
	construction ----- 7 × 7 + 6 × WS(26)
	Hook block ----- 2 sheaves

SWING Hydraulic motor driven Worm gear speed reduction Continuous
 360° full circle swing on ball bearing slew ring
 Automatic swing lock
 Swing speed ----- 2.5 min⁻¹{rpm}

OUTRIGGERS Manually extended sliders and hydraulically extended jacks
 Integral with crane frame Power up and down
 Extended width ----- Min. 2,200 mm
 Mid. 3,000 mm
 Max. 3,800 mm

HYDRAULICS Hydraulic pump ----- Single gear pump
 Hydraulic motors ----- Axial piston type for winch
 Axial piston type for swing
 Control valves ----- Multiple control valves with integral
 safety valve

SAFETY DEVICES Load meter
 Load indicator
 Over-winding alarm
 P.T.O. indicator lamp
 Hook safety latch
 Level gauge
 Hydraulic safety valves, check valves and holding valves

CRANE MASS Approx. 1,665 kg (includes standardized mounting parts)

NOTE : Operating speeds of the crane are guaranteed under the
 condition that the pump delivery is 60 L /min.

RATED LIFTING CAPACITIES IN KILOGRAMS

A \ B		A	
		3.47 m 5.91 m	8.31 m
2.95m and below		4,040	3,030
3.5 m		3,380	2,580
3.9 m		3,030	2,280
4.5 m		2,580	2,030
5.0 m		2,280	1,830
5.5 m		2,030	1,680
			1,550
			1,430
			1,280

A : Boom Length

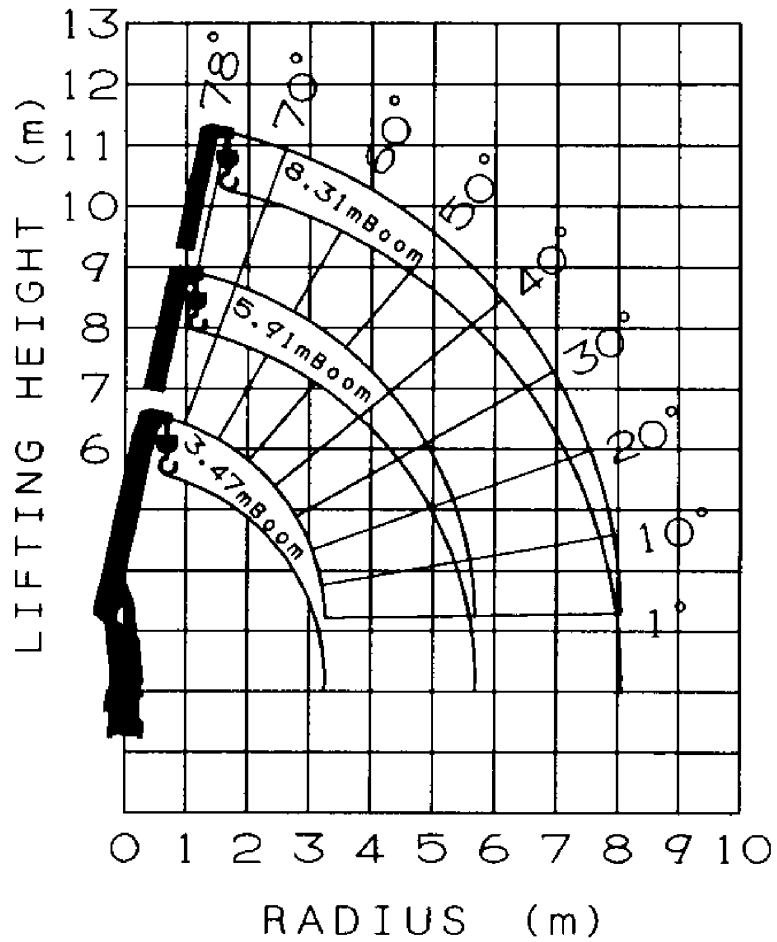
B : Load radius

NOTES :

1. The mass of the hook (45 kg), slings and all similarly used load handling devices must be added to the mass of the load.
2. The above numerical values of rated lifting capacities are based on crane strength only.

The rated lifting capacities based on stability may lower than those in the above table depending on the loading conditions and the types of the chassis.

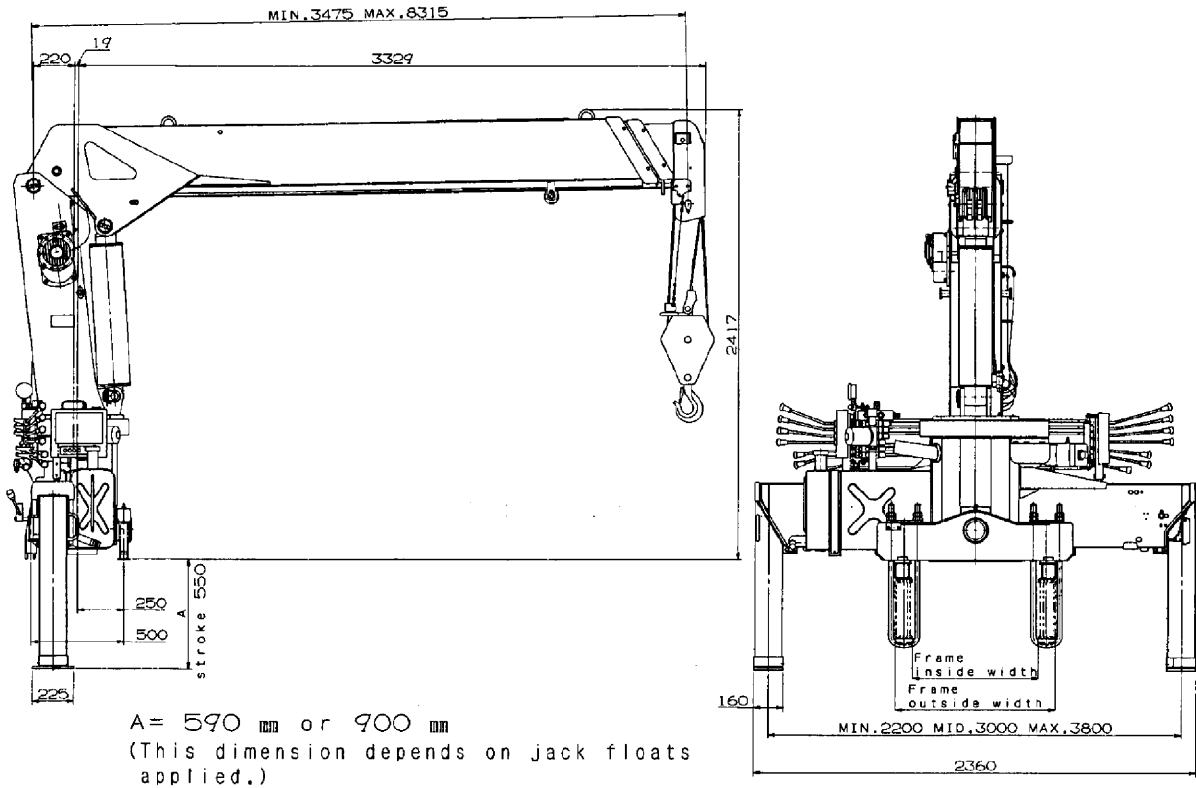
WORKING RANGE



NOTE:

The above lifting heights and boom angles are based on a straight (unladen) boom, and allowance should be made for boom deflection obtained under laden conditions.

D I M E N S I O N S



G E N E R A L D A T A F O R S U I T A B L E T R U C K S

- Gross vehicle mass (including crane mass) -----
12,000 to 25,000 kg
- P.T.O. torque ----- 157 N·m {16 kgf·m} min.
- P.T.O. revolution ----- Approx. 270 to 2,800 min⁻¹ {rpm}
- Width for crane mounting ----- Approx. 750 mm min.
- Frame ----- Weight distribution and frame strength
should be calculated for each truck
- Frame width range (inside to outside) -----
Approx. 610 to 960 mm
- Frame height (ground to frame top) -----
Approx. 1,235 mm max.
(Height of crane mounting base can be
changed by combination of jack floats
and crane bases)