

TADANO CARGO CRANE

MODEL : TM-ZR103

CRANE SPECIFICATIONS

CRANE CAPACITY 1,000 kg at 1.7 m (3-part lines)

BOOM Three-sectioned, fully powered synchronized telescoping boom
Retracted length ----- 1.51 m
Extended length ----- 3.83 m
Extending speed ----- 2.32 m / 4 s
Elevation ----- Elevated by a double-acting
hydraulic cylinder
Elevating speed ----- 0° to 75° / 4 s
Boom point ----- 2 sheaves

WINCH Hydraulic motor driven Worm gear speed reduction, provided
with worm self-lock brake.
Single line pull ----- 3.27 kN {333 kgf}
Single line speed ---- 49.5 m/min (at 3rd layer)
Wire rope
diameter × length-----
6.3 mm × 22 m
breaking strength ---21.1 kN {2.15 tf}
construction ----- 6 × 37
Hook block ----- Single sheave

SWING Hydraulic cylinder driven (rack and pinions)
 Swing speed----- 200° /13 s

OUTRIGGERS Hydraulically operated jacks, integral with crane frame.
 Power up and down
 Extended width----- 700 mm to right
 717 mm and 1,160 mm to left

HYDRAULICS Hydraulic pump ----- Single gear pump
 Hydraulic motors ----- Axial piston type for winch
 Control valves ----- Multiple control valves with integral
 safety valve
 Oil tank capacity----- 20 L

SAFETY DEVICES Load meter
 Load indicator
 Over-winding alarm
 P.T.O indicator lamp
 Hook safety latch
 Hydraulic safety valves, check valves and holding valves
 Level gauge

CRANE MASS Approx. 490 kg (except mounting parts)

NOTE : Operating speeds of the crane are guaranteed under the
 condition that the pump delivery is 45 L /min.

RATED LIFTING CAPACITIES IN KILOGRAMS

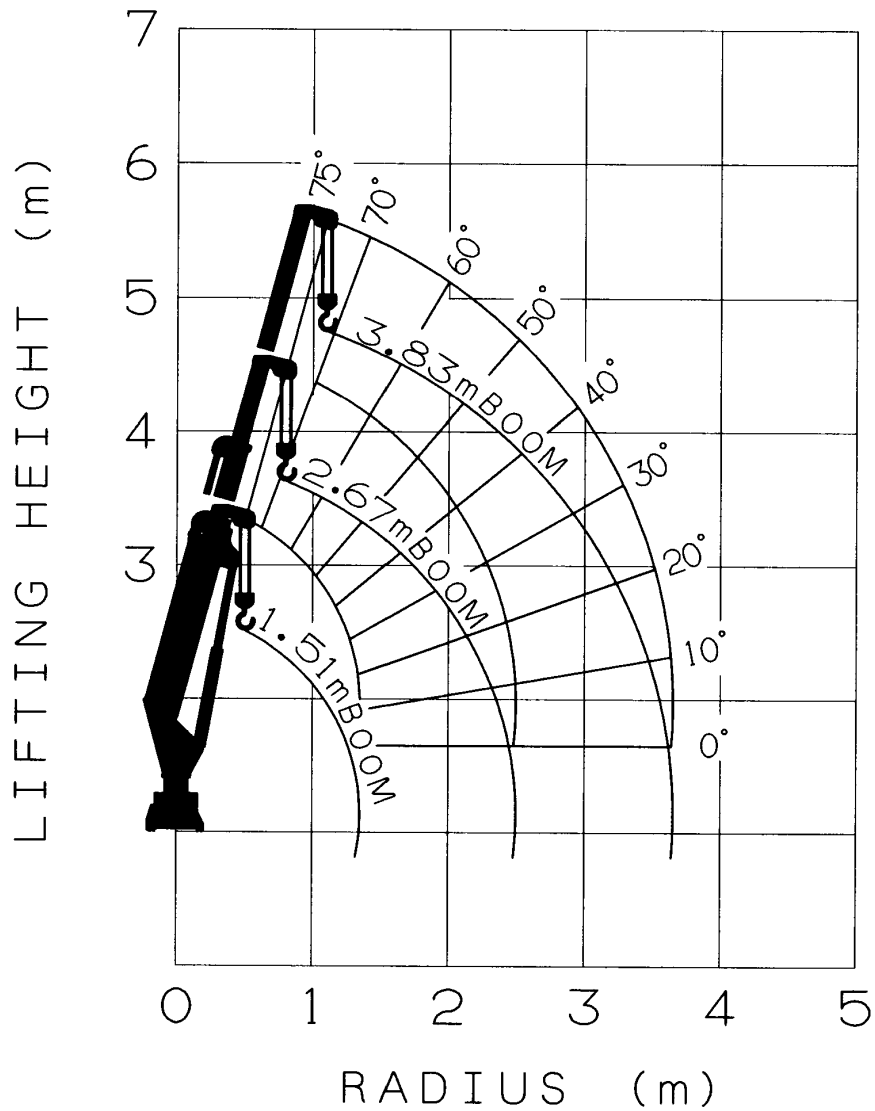
Load radius (m)	1.8 and below	2.0	2.5	3.0	3.64
Rated lifting capacity	1,000	850	665	520	440

NOTES :

1. The mass of the hook (12 kg), slings and all similarly used load handling devices must be added to the mass of the load.
2. The above numerical values of rated lifting capacities are based on crane strength only.

The rated lifting capacities based on stability may lower than those in the above table depending on the loading conditions and the types of the chassis.

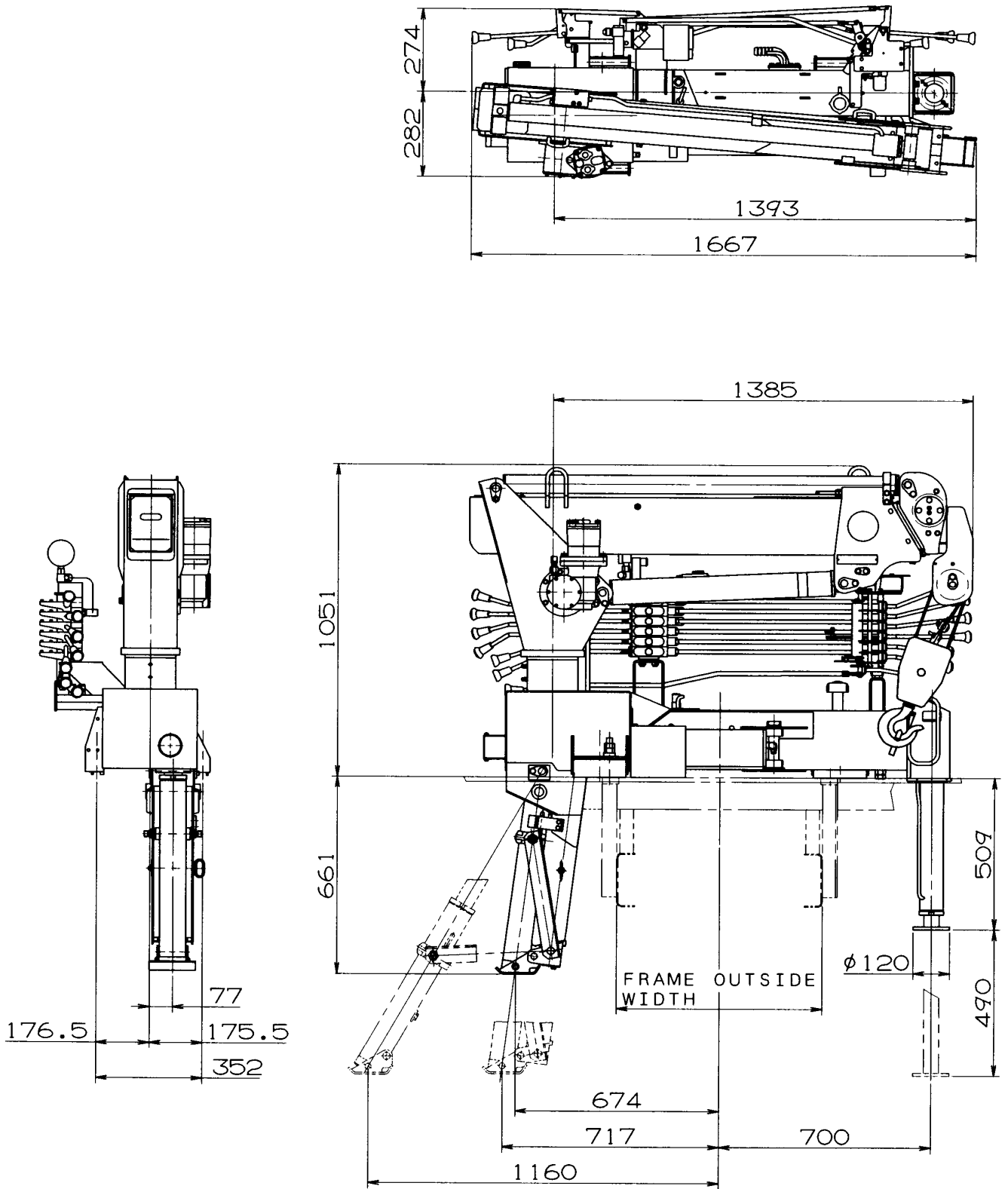
WORKING RANGE



NOTE:

The above lifting heights and boom angles are based on a straight (unladen) boom, and allowance should be made for boom deflection obtained under laden conditions.

DIMENSIONS



GENERAL DATA FOR SUITABLE TRUCKS

Gross vehicle mass (including crane mass) -----
 3,800 to 7,000 kg

P.T.O. torque ----- 83 N·m {8.5 kgf·m} min.

P.T.O. revolution ----- Approx. 350 to 2,700 min⁻¹ {rpm}

Width for crane mounting-- Approx. 610 mm min.

Frame ----- Weight distribution and frame strength
 should be calculated for each truck

Frame width range (inside to outside) -----
 Approx. 603 to 869 mm

Frame height (ground to frame top) -----
 Approx. 880 mm max.
 (Height of crane mounting base can be
 changed by use of crane bases)